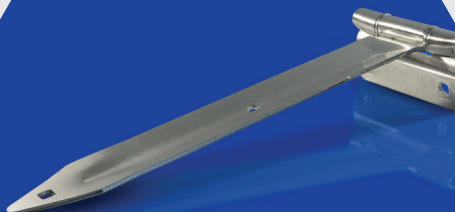
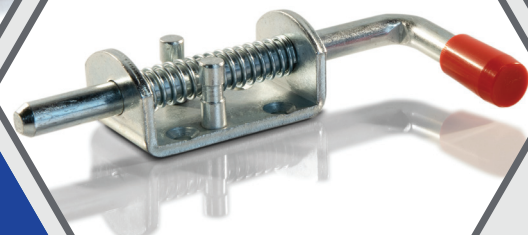
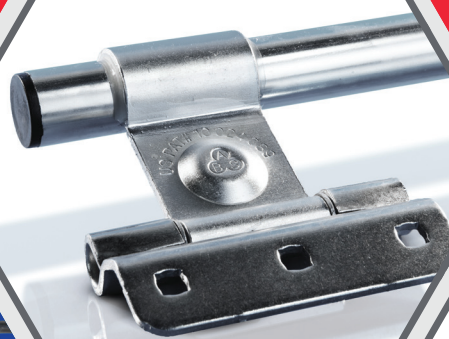


# CARGO HARDWARE





# HINGES, TIE DOWNS, BUMPERS & MORE

## HR9-3-GZ

RAMP ROLLER HINGE 9", 3 PIECE DESIGN

PLAIN FINISH, WITH GREASE ZERK

ALSO AVAILABLE IN 12" LENGTH



## HBR10-GZ

RAMP ROLLER HINGE 10" OFFSET

PLAIN FINISH, WITH GREASE ZERK



## GBCSA

ALUMINUM CARGO GRAB BAR

COUNTER SUNK HOLES



## GBCSBKP

BLACK PLASTIC CARGO GRAB BAR

CONCEALED SCREW



## H200X72A-NH

2" X 72" CONTINUOUS HINGE, NO HOLES OR BENDS

.060 THICK, .087 PIN, 1/2 NUCKLES, ALUMINUM

ALSO AVAILABLE IN STEEL



## JLB433X602M/P977

JOINING LINK BAR WELD ON .433 X 6.02"

PLAIN STEEL

ALSO AVAILABLE IN .488 X 6.77"



## JL38X330F

JOINING LINK 3/8 X 3.30"

FORGED STEEL

ALSO AVAILABLE IN 7/16 DIAMETER



## 1-LC-UP-GZ

RAMP ROLLER HINGE, 6" STANDARD BREAK

PLAIN FINISH, WITH GREASE ZERK



## TD2500

D-RING TIE DOWN, OVAL

W/CENTER HOLE, 2500 LB CAPACITY



## TD6001

D-RING TIE DOWN, HEAVY DUTY

W/ROUND HOLES, 6000 LB CAPACITY



## TD858

D-RING TIE DOWN, 4" ROUND

PLASTIC BASE, 1200 LB CAPACITY



## TD6000

D-RING TIE DOWN, HEAVY DUTY

W/SQUARE HOLES, 6000 LB CAPACITY



## RB250RBK

2-1/2" RAMP DOOR BUMPER

BLACK RUBBER



## RB250X200BK/P973

2-1/2" OD X 2" H RUBBER BUMPER

BLACK



## RBHD600X300BK/P974

6" X 3" RUBBER BUMPER, HIGH DOCK

BLACK





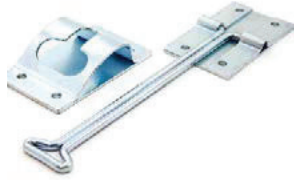
# LOCKS, LATCHES & MORE

## DHB-CB-6Z

**6" T-STYLE DOOR HOLD BACK**

ZINC PLATED

ALSO AVAILABLE IN 10" LENGTH



## MDSUAZ-263106

**8" MANUAL DOOR SUPPORT ARM**

**CLOSED LENGTH W/MOUNTING BRACKETS**

ZINC PLATED



## DHB-CB

**3 1/2" DOOR HOLD BACK**

430 STAINLESS



## DHB

**6" T-STYLE PLASTIC DOOR HOLD BACK WITHOUT BUMPER**

DHB-BKP6 - BLACK \*

DHB-WP-6 - WHITE



## TTEDL43610

**TRAVEL TRAILER ENTRY DOOR LATCH W/ KEYED DEADBOLT INCLUDES STRIKE PLATES & MOUNTING HARDWARE**

TTEDL43610PC - POLISHED CHROME \*

TTEDL43610-BK - BLACK

TTEDL43610-W - WHITE



## TL039

**FINGER TRIGGER LATCH FLUSH MOUNT**

TL039-PC - POLISHED CHROME \*

TL039-BK - BLACK

TL039-W - WHITE



## L14N

**14" LOW HINGE, NO FORM WELD**

ZINC PLATED

L14N - NO HOLES

L14-WH - WITH HOLES \*



## L164-OM

**16" LOW HINGE, 1/4" OFFSET OVERMOLD**

ZINC PLATED

ALSO AVAILABLE IN 14"



## L140-CM

**14" FLUSH MOUNT TRAILER HINGE**

**OVERMOLD OFFSET W/ MOUNTING HOLES**

BRIGHT ZINC PLATED



## L14-2532-OM

**14" TRAILER HINGE, 25/32" OFFSET OVERMOLD W/ MOUNTING HOLES**

NEUTRAL ZINC



## HSP6500S

**BAR LOCK HASP**

**SELF LOCKING KEYED PLASTIC**

HSP6500SLBK-K - BLACK \*

HSP6500SLW-K - WHITE



Lock only, Handle not included

## SGL500Z/P918

**5" X 3" W/FLAT & BENT CATCH**

**SLIDING GATE LATCH**

ZINC PLATED



## LPLATEBRKT-W/S

**LICENSE PLATE HOLDER**

BLACK PLASTIC W/SCREWS







# SAFETY CHAIN

**SAFETY CHAINS** are the chains that are connected from the trailer tongue to the tow vehicle.

They are an essential piece for making sure your trailer is properly connected to your tow vehicle.

Safety chains are also necessary so that you can still safely guide your trailer and maintain control as you make your way to a safe stopping point in the event of a ball or coupler failure.

Two safety chains are required and must be attached to their own chain retainers.



**STEEL S-HOOK**

ABS safety chains are available in various lengths & load ratings, & fittings. Available in Zinc & Yellow Zinc finish. All products are D.O.T certified and tested for quality.

**CLEVIS SLIP HOOK**

Working load limit (WLL) is the maximum working load designed by the manufacturer. This load represents a force that is much less than required to make the product fail or yield - also known as breaking load.

***Ask your ABS sales representative about safety chain today!***



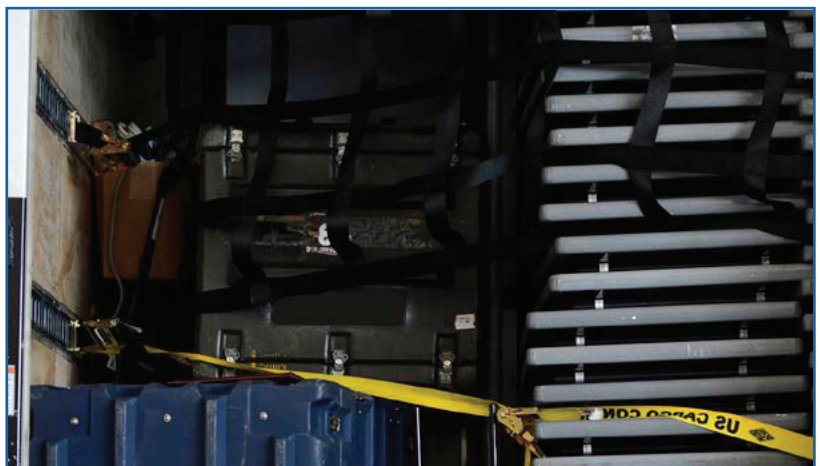
# E-TRACK

## **BST10/BKP**

**10FT HORIZONTAL E-TRACK  
BLACK POWDER COATED**

ALSO AVAILABLE IN PLAIN FINISH

CUSTOM LENGTHS AVAILABLE UPON REQUEST



***Used for securing straps to inside walls or beds of trucks and trailers.***



# BAR & CAM LOCKS

## BAR LOCKS

**TAMPER PROOF, 14" BLACK RUBBER HANDLE,  
ZINC PLATED STEEL, AVAILABLE WITH HASP**

AVAILABLE IN 36", 45" AND 55" LENGTHS

120/PALLET



U.S. PATENT NO 10,024,089

*Clear Coat Protectant Zinc Coating for Superior Corrosion Resistance*

## CAM LOCKS

**TAMPER PROOF, 14" BLACK RUBBER HANDLE, ZINC  
PLATED STEEL, AVAILABLE WITH HASP**

COMES WITH STANDARD ROD GUIDES,  
TOP & BOTTOM HOOK, TOP & BOTTOM LATCH AVAILABLE IN  
78" AND 108" LENGTHS

120/PALLET

TLATCH-TOP LATCH

TOOK-TOP HOOK

RCL2-T-ROD GUIDE TOP RCL2-B-  
ROD GUIDE BOTTOM

CLA1-SLEEVE - SLEEVE

HSP6200-1PC HASP ASSEMBLY

BOOK-BOTTOM HOOK

BLATCH-BOTTOM LATCH

## CAM LOCK KIT

**1 HANDLE, 1 HASP, 1 HINGE**

CLK-1-1RH - REGULAR ROLLER HINGE

CLK-1-1OH - OFFSET ROLLER HINGE

## HSP6100

**HASP ASSEMBLY - 2 PIECE RIVETED DESIGN**

ZINC PLATED

## HSP6200

**HASP ASSEMBLY - 1 PIECE RIVETED DESIGN**

ZINC PLATED

# BLACK-OUT LINE





# TAMPERPROOF BARLOCK HARDWARE



**OUR UNIQUE DESIGN ALLOWS YOU TO SWITCH  
FROM TAMPERPROOF TO NON-TAMPERPROOF  
EASILY AND EFFICIENTLY.**

## KEY FEATURES

- Clear coat protective zinc coating
- Superior corrosion resistance
- Strength tested & approved
- Thick, sturdy design
- Available in 24", 36", 45", 55"
- 14" Black rubber handle
- Also available in black

**NEW & PATENTED!**



**U.S. PATENT NO. 10,204,089**



*For Enclosed Cargo Trailers*

*Hasps Sold Separately*



**AVAILABLE ONLY AT ABS FASTENERS**





# JACK & COUPLER COMPONENTS



## A-FRAME TRAILER COUPLER

- 2 Inch Ball Coupler  
(Also available in 2-5/16")
- Weld-On
- 5,000lbs & 14,000lbs.
- Standard Coupler
- Yoke Latch



## TOP WIND JACKS

- Standard A-Frame Jack
- 14 Inch Lift
- No Wheel or Foot
- Available in 2,000 & 5,000lbs
- No Drop Leg

## JACK FOOT STANDS & FEET



# TRAVEL TRAILER LOCKS



## ENTRY DOOR LOCK FEATURES

- Glass Filled Nylon Design-UV Resistant
- Keyed Cylinder & Deadbolt
- Available in Black, White & Chrome
- Available in Custom Keyways
- Tested to 200,000 cycles.
- Strike Plates & mounting hardware included.



Available in Black, White & Chrome

## BAR LOCK HASPS FEATURES

- Zinc Alloy Design
- Keyed Cylinder
- Squared or Modern Design available
- Mounting hardware included
- Custom Keyways available (Keyed alike program)



Squared or Modern Design available







# JS-1000

## CLEAR 1000 COATING

**GUARANTEED PERFORMANCE THAT OUTPERFORMS AND OUTLASTS OTHER PREMIUM COATINGS**



### ***THE PROOF IS IN THE TESTING!***

Our CLEAR-1000 formula has been proven to remain rust-free in over 1,000 hours of salt spray testing which is an astonishing 20-25 times the corrosion resistance of regular electro-zinc products and considerably more than the best known coatings on the market.

CLEAR-1000 delivers the kind of performance that you've only been able to get by making the jump to costly stainless steel fasteners at a far more cost effective price.

### ***OTHER FEATURES INCLUDE***

High lubricity for reduced tapping torque

Can be powder coated for color match and increased rust resistance.

Totally compatible with aluminum and other metals used in construction.

Hexavalent Chromium Free, R.O.H.S compliant and environmentally friendly!



**PERFECT FOR WINDOWS, DOORS, TRAILERS  
AND A VARIETY OF OUTDOOR APPLICATIONS**





# QUICK REFERENCE

*A quick, visual reference of common fasteners.*

## BOLTS



Hex Cap Screw



Hex Tap Bolt



Hex Machine Bolt



Carriage Bolt



Hex Lag Bolt



Flange Bolt



Elevator Bolt



U-Bolt



Hanger Bolt



Eye Bolt



Track Bolt



Joint Connector Bolt

## SOCKETS



Socket Head Cap Screw



Flat Head Socket Cap Screw



Button Head Socket Cap Screw



Socket Head Shoulder Screw



Socket Set Screw



Hex Key

## NUTS



Finished Hex Nut



Finished Hex Jam Nut



Machine Screw Nut



Square Machine Screw Nut



Coupling Nut



Flange Nut



Acorn Nut



Nylon Insert Lock Nut



Keps Lock Nut



Slotted Nut



Square Nut



Wing Nut



Tee Nut



Propell Nut



Joint Connector Nut



Weld Nut



Cross Dowell Nut



Flat Retainer Nut



Insert Nut

## WASHERS

USS Flat Washer



SAE Flat Washer

Fender Washer



Bonded Sealing Washer

Medium Split Flat Washer



Finishing Washers

Internal Tooth Lockwasher



External Tooth Lockwasher

Internal/External Tooth Lockwasher



Torque Washer

## PINS



Dowel Pin



Roll Pin



Hitch Pin Clip



Clevis Pin



Bed Pin



Bullet Pin



Racking Pin

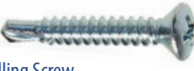
## SCREWS



Machine Screw



Sheet Metal Screw



Self Drilling Screw



Thread Cutting Screw



Wood Screw



Drywall Screw



Thumb Screw



Dowel Screw

## RIVETS



Blind Rivets - Aluminum, Steel & Stainless Steel



Large Flange



Semi-Tubular

## NAILS



Box Nails



Common Nails



Drive Screw Nails



Roofing Nails



Duplex Nails



Joist Hanger Nails



Masonry Nails



Ring Shank Nails



Drywall Nails

*Many plating, coating, and finish options are available on most products. Just let us know your requirements!*





# PAINTING SERVICES

## FASTENER PAINTING

- Can run many sizes and colors at the same time
- Diameters: #4 thru 3/8
- Lengths: Up to 3"
- Add Neoprene or detachable washers
- Powder Coating
- ISO:9000 Compatible
- Screws, Blind Rivets, Nuts, Washers
- Must be clean - free of oil or wax
- Pantone Colors - Anything under the rainbow
- Any Finish - From high gloss to flat
- Metallic and UV resistant also available
- Polyurethane or Waterborne



## BENEFITS OF PAINTING...

- Painting offers a seamless look to your project, helping the fastener blend in to the surrounding surface.
- It also offers corrosion and rust resistance, so your fastener will last longer when exposed to the elements.

## TYPES OF FASTENERS

- Screws
- Bolts
- Washers
- Rivets
- Nails

## COMMON APPLICATIONS

- Rain Gutters
- Metal Roofing
- Electrical Projects
- Decking
- Carpentry
- Truck & Trailer
- Vinyl Fencing

**ANY COLOR...  
ANY FINISH!**

*Need a custom color for a job? DONE!*







# PLATING REFERENCE

## NICKEL ELECTROPLATE

- Decorative silver appearance
- Good wear
- Mild corrosion resistance - for indoor use



## ZINC ELECTROPLATE

- Bright blue or white appearance
- Moderate corrosion resistance - for suburban use

## ZINC MECHANICAL PLATE

- Similar in appearance to electroplate
- Less susceptible to hydrogen embrittlement
- Moderate corrosion resistance - for suburban use



## ZINC ELECTROPLATE - YELLOW CHROMATE

- Thicker conversion than clear
- Severe corrosion resistance - for industrial use



## ZINC ELECTROPLATE - OLIVE DRAB CHROMATE

- Thicker coating than yellow
- Severe corrosion resistance - for industrial use

## ZINC MECHANICAL - BRIGHT CHROMATE

- Thin bright conversion coating
- Can be dyed for paint bonding
- Moderate corrosion resistance - for suburban use

## ZINC MECHANICAL - YELLOW CHROMATE

- Thicker conversion than clear
- Increased corrosion resistance - for industrial use

## ZINC MECHANICAL - OLIVE DRAB CHROMATE

- Thicker coating than clear
- Increased corrosion resistance - for industrial use

## ZINC MECHANICAL - CHROMATE + ORGANIC

- Additional organic (cured) coating
- Increased corrosion resistance - for industrial use

## BLACK OXIDE + OIL

- Porous & thin
- Mild corrosion resistance - for indoor use



## BRASS PLATE - LACQUERED

- Decorative electroplated finish
- Mild corrosion resistance - for indoor use

## CHROMIUM ELECTROPLATE

- Bright lustrous blue / white finish
- Mild corrosion resistance - for indoor use

## AL-1000 COATING

- Recommended on parts where stress and corrosion are a problem
- Uniform decorative finish
- No hydrogen embrittlement
- Excellent solvent & corrosion resistance
- Hard, durable coating will take abuse without chipping or scratching Can be applied to Carbon Steel, Alloy Steel, Stainless Steel, Titanium, and Aluminum Alloys.

## JS-1000 COATING

- Proven to remain 100% rust free in over 1000 hours of salt spray testing
- High lubricity for reduced tapping torque
- Hexavalent Chromium Free and RoHS compliant
- Completely non-toxic & environmentally friendly
- Can be powder coated for color match which also increases rust resistance



## AL-2000 COATING

- No electrochemical or chemical atmosphere corrosion
- Excellent corrosion and solvent resistance
- Uniform decorative finish in black, silver & gold
- Absolutely no hydrogen embrittlement



## COPPER ELECTROPLATE - LACQUERED

- Bright decorative finish
- Electrically Conductive
- Mild corrosion resistance - for indoor use

## CHROMIUM ELECTROPLATE - COPPER & NICKEL UNDERCOAT

- Surface is hard and abrasive resistant
- Primarily for decorative use
- Mild corrosion resistance - for indoor use

## HOT DIP ZINC MECHANICAL GALVANIZED

- Dark grey, very thick coating
- Severe corrosion resistance - for industrial use

## WHAT IS...

### Conversion Coating

A chemical reaction converts part of the metal surface into the coating.

### Hydrogen Embrittlement

The accidental introduction of hydrogen into the metal reduces tensile strength of material which could lead to fractures or cracks in the fastener.

### RoHS Compliant

Stands for: Restrictions of Hazardous Substances. It restricts use of 10 hazardous materials found in electrical and electronic products.